

低リンタイプ無電解ニッケル/炭化ケイ素複合めっき液

Low-phosphorus Type, Electroless Nickel/Silicon Carbide Composite Plating Solution

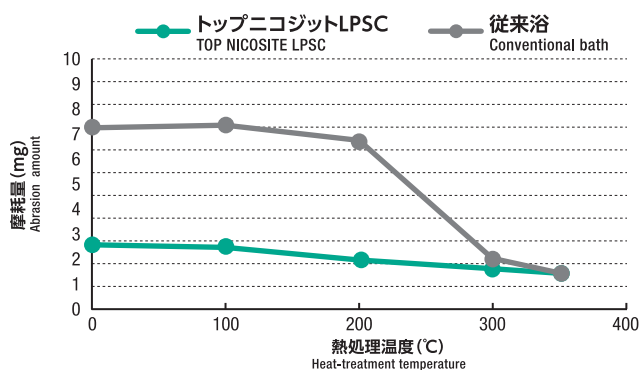
トップニコジットLPSC

TOP NICOSITE LPSC

- 析出皮膜は、耐摩耗性に優れている
Excellent in abrasion resistance
- リン含有率が1~3wt%と低く、硬度が高い
High hardness comes available Phosphorus ratio: 1 to 3% by weight
- 析出皮膜はHv700で、熱処理によりHv1000以上の硬度が得られる
Film hardness: Hv 700 (as deposited) , over Hv 1,000 (after heat treatment)

優れた耐摩耗性

Excellent in abrasion resistance



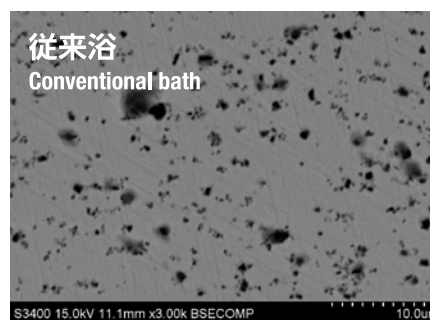
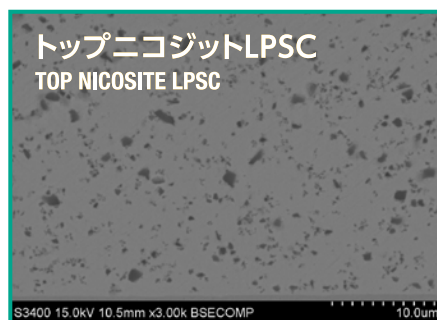
測定機器	Tester
スガ摩耗試験機	NUS-ISO3 Suga abrasion tester
スガ試験機株製	Made by Suga Test Instruments Co., Ltd.
荷重	Load
1.5kgf (14.7N), #600	
往復回数	Reciprocating-motion times
300回	times

熱処理温度と摩耗量の関係

Relationship of heat-treatment temperature and abrasion amount

従来浴と同等以上の均一な析出

Improve deposition uniformity from conventional bath

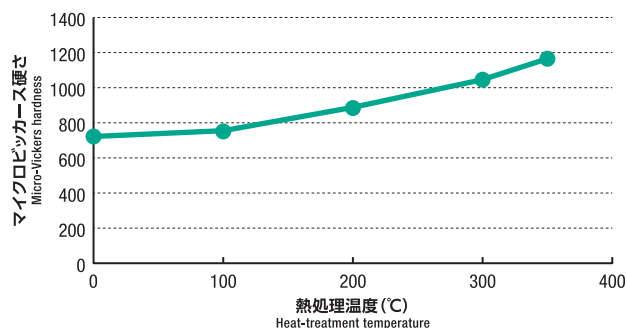


めっき皮膜の断面SEM像

Cross-sectional SEM image of deposit

高い硬度

Great hardness

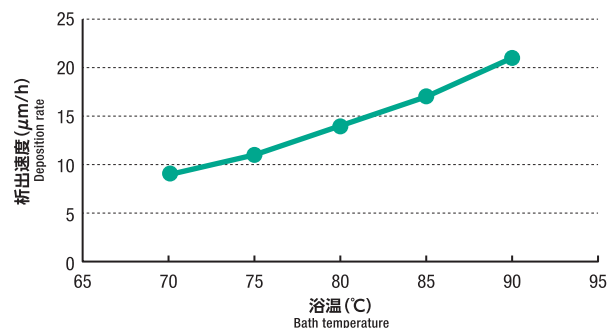


熱処理温度と皮膜硬度の関係

Relationship of heat-treatment temperature and film hardness

析出速度が優れる

Excellent in deposition rate



浴温と析出速度の関係

Relationship of bath temperature and deposition rate